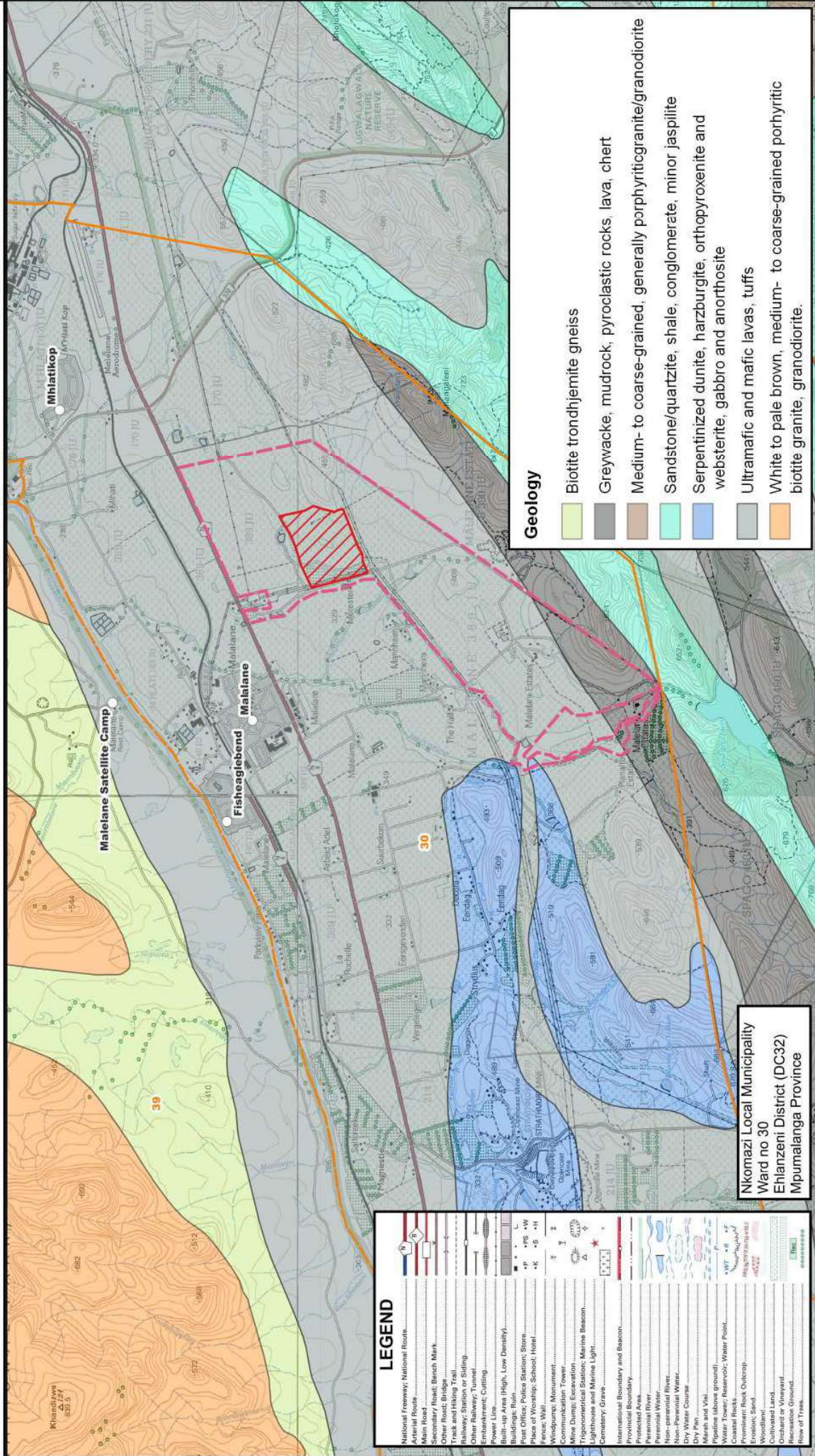


Khanyazwe Flexpower Gas to Power Project in Nkomazi Local Municipality, Ward 30, Mpumalanga Province



LEGEND

National Freeway, National Route	—
National Road	—
Secondary Road	—
Other Road; Bench Mark	—
Track and Hiking Trail	—
Railway; Station or Siding	—
Other Railway; Tunnel	—
Embarkment; Cutting	—
Power Lines High, Low Density	—
Buildings; Ruin	—
Post Office; Police Station; Store	—
Place of Worship; School; Hotel	—
Fences; Wall	—
Windpump; Monument	—
Communication Tower	—
Phone Dumpy; Post Station	—
Lighthouse and Marine Beacon	—
Cemetery; Grave	—
International Boundary and Beacon	—
Provincial Boundary	—
Protected Area	—
Perennial River	—
Non-perennial River	—
Non-Perennial Water	—
Ditch	—
Any Water Course	—
Marsh and Vlei	—
Pipeline (above ground)	—
Water; Reservoir; Water Point	—
Prominent Rock Outcrop	—
Woodland	—
Cultivated Land	—
Orchard or Vineyard	—
Recreation Ground	—
Flow of Tides	—

Nkomazi Local Municipality
Ward no 30
Ehlanzeni District (DC32)
Mpumalanga Province

Legend

○	Place Names
—	RE/1/389 Boundary
▨	Khanyazwe Flexpower
▨	Wards

Geology Map

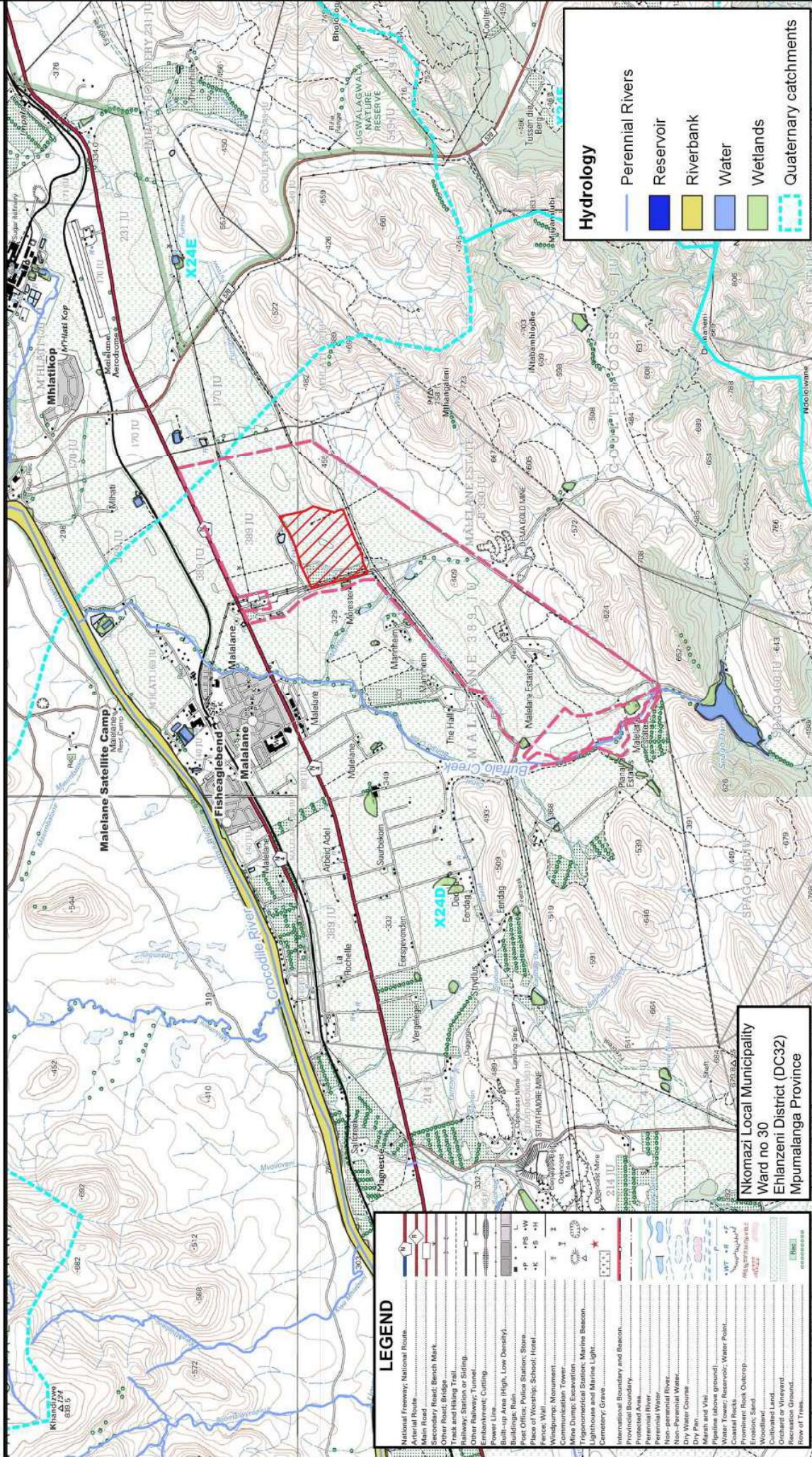
Date: 09 January 2024
0 1 2 km
Projection: Transverse Mercator
Datum: WGS 84
Compiled by: Sinenjongo Spamia
Scale = 1: 50 000

Geology

Light Green	Biotite trondhjemite gneiss
Grey	Greywacke, mudrock, pyroclastic rocks, lava, chert
Brown	Medium- to coarse-grained, generally porphyriticgranite/granodiorite
Light Blue	Sandstone/quartzite, shale, conglomerate, minor jaspilite
Dark Blue	Serpentinized dunite, harzburgite, orthopyroxenite and websterite, gabbro and anorthosite
Dark Grey	Ultramafic and mafic lavas, tufts
Orange	White to pale brown, medium- to coarse-grained porphyritic biotite granite, granodiorite.

NSOVO
ENVIRONMENTAL CONSULTING
Nsovo Environmental Consulting
Telephone: 087-803-9294
Email: Admin@nsovo.co.za
Website: www.nsovo.co.za
40 Lyncon Rd, Carlswald,
Midrand, 1684.

Khanyazwe Flexpower Gas to Power Project in Nkomazi Local Municipality, Ward 30, Mpumalanga Province



LEGEND

International Freeway, National Route	Water
National Route	Wetlands
Regional Road	Quaternary catchments
Secondary Road	
Other Road: Bridge	
Track and Hiking Trail	
Railway, Station or Sliding	
Other Railway, Tunnel	
Embankment, Cutting	
Power Lines (High, Low Density)	
Buildings: Ruin	
Post Office, Police Station, Store	
Place of Worship, School, Hotel	
Fences: Wall	
Windpump, Monument	
Phone Dumper, Fuel Station	
Communication Tower	
Windmill, Lighthouse	
Maritime Beacon	
Cemetery: Grave	
International Boundary and Beacon	
Provincial Boundary	
Provincial Area	
Perennial River	
Non-perennial River	
Non-Perennial Water	
Dry Water Course	
Marsh and Vlei	
Pipeline (above ground)	
Water Tower, Reservoir, Water Point	
Prominent Rock, Outcrop	
Woodland	
Cultivated Land	
Orchard or Vineyard	
Recreation Ground	
Flow of Trees	

NSOVO
ENVIRONMENTAL CONSULTING

Nsovo Environmental Consulting
Telephone: 087-803-9294
Email: Admin@nsovo.co.za
Website: www.nsovo.co.za
40 Lyncon Rd, Cariswald,
Midrand, 1684.

Date: 09 January 2024

0 1 2 km

Projection: Transverse Mercator
Datum: WGS 84
Compiled by: Sinenjongo Spamila
Scale = 1: 50 000

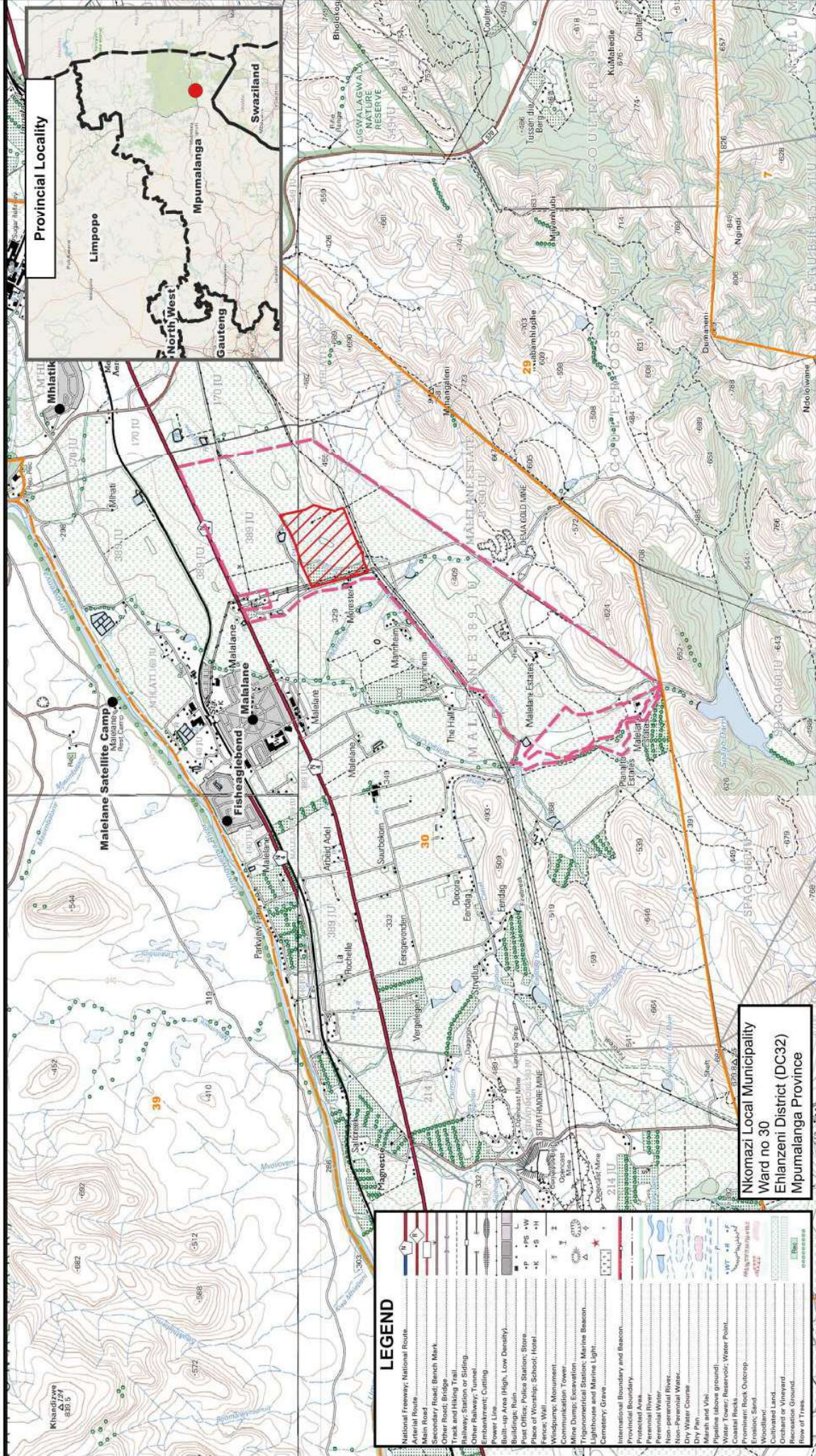
Hydrology Map

Legend

- Place Names
- ▨ RE/1/389 Boundary
- ▨ Khanyazwe Flexpower

Nkomazi Local Municipality
Ward no 30
Ehlanzeni District (DC32)
Mpumalanga Province

Khanyazwe Flexpower Gas to Power Project in Nkomazi Local Municipality, Ward 30, Mpumalanga Province



Provincial Locality

Nkomazi Local Municipality
Ward no 30
Ehlanzeni District (DC32)
Mpumalanga Province

LEGEND	
	National Freeway, National Route
	National Road
	Secondary Road, Bench Mark
	Other Road, Bridge
	Track and Hiking Trail
	Railway, Station or Stiding
	Other Railway, Tunnel
	Embankment, Cutting
	Tower (Lines High, Low Density)
	Buildings, Ruin
	Post Office, Police Station, Store
	Place of Worship, School, Hotel
	Fences, Wall
	Windmills, Monument
	Communication Tower
	Mine Dump, Fuel Station
	Lighthouse and Marine Beacon
	Cemetery, Grave
	International Boundary and Beacon
	Provincial Boundary
	Protected Area
	Perennial Water
	Non-perennial Water
	Dry Water Course
	Marsh and Vlei
	Pipelines (above ground)
	Water Tower, Reservoir, Water Point
	Coastal Rocks
	Prominent Rock, Outcrop
	Woodland
	Cultivated Land
	Orchard or Vineyard
	Recreation Ground
	Flow of Trees

NSOVO Environmental Consulting
 Telephone: 087-803-9294
 Email: Admin@nsovo.co.za
 Website: www.nsovo.co.za
 40 Lyncon Rd, Carlsward,
 Midrand, 1684.

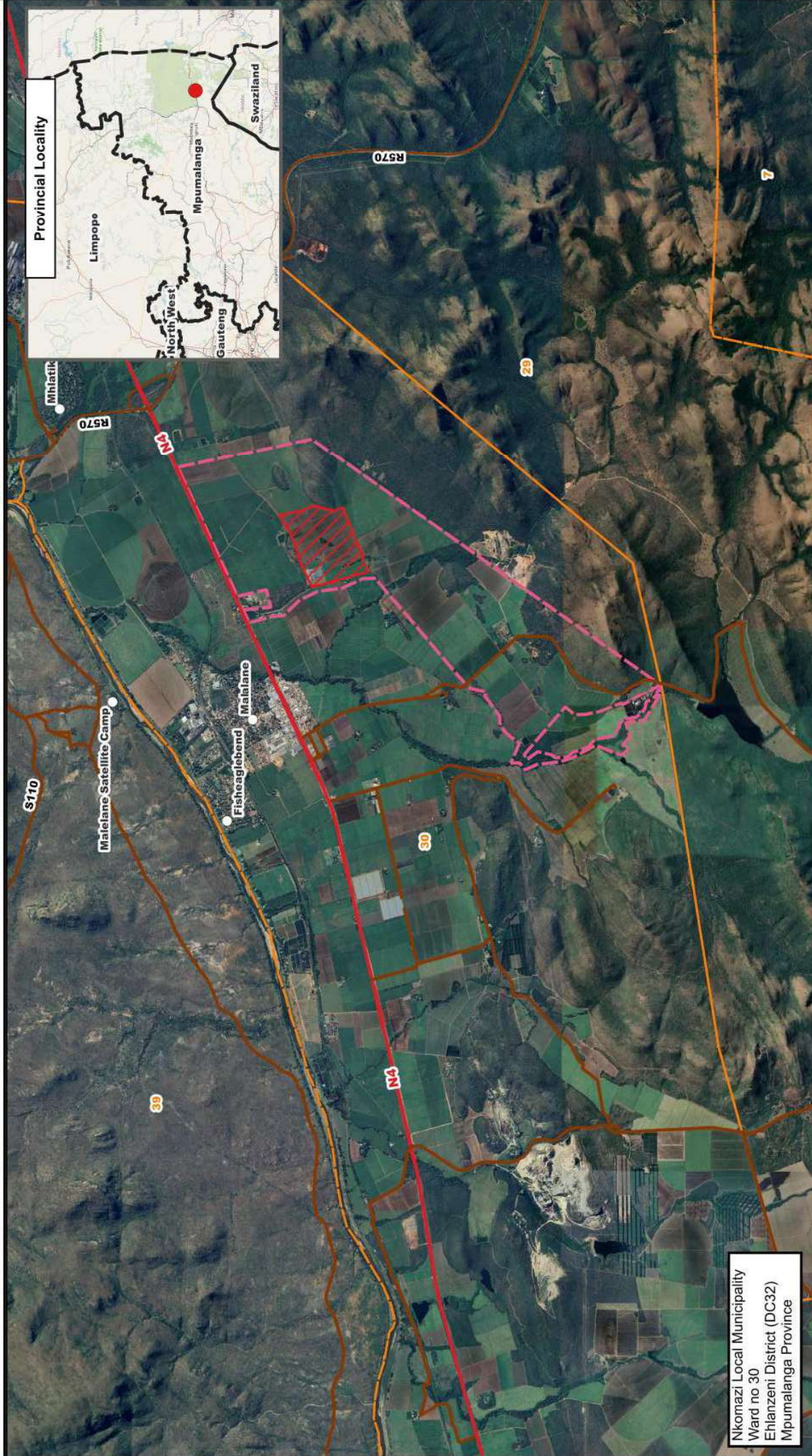
Date: 09 January 2024
 0 1 2 km
 Projection: Transverse Mercator
 Datum: WGS 84
 Compiled by: Sinenjongo Spamia
 Scale = 1: 50 000

Locality Map

Legend

- Place Names
- RE1/389 Boundary
- Khanyazwe Flexpower
- Wards

Khanyazwe Flexpower Gas to Power Project in Nkomazi Local Municipality, Ward 30, Mpumalanga Province



Nkomazi Local Municipality
 Ward no 30
 Ehlanzeni District (DC32)
 Mpumalanga Province

Legend

- Place Names
- RE/1/389 Boundary
- Khanyazwe Flexpower
- Wards
- Secondary Roads
- Main Roads



Locality Map

Date: 09 January 2024

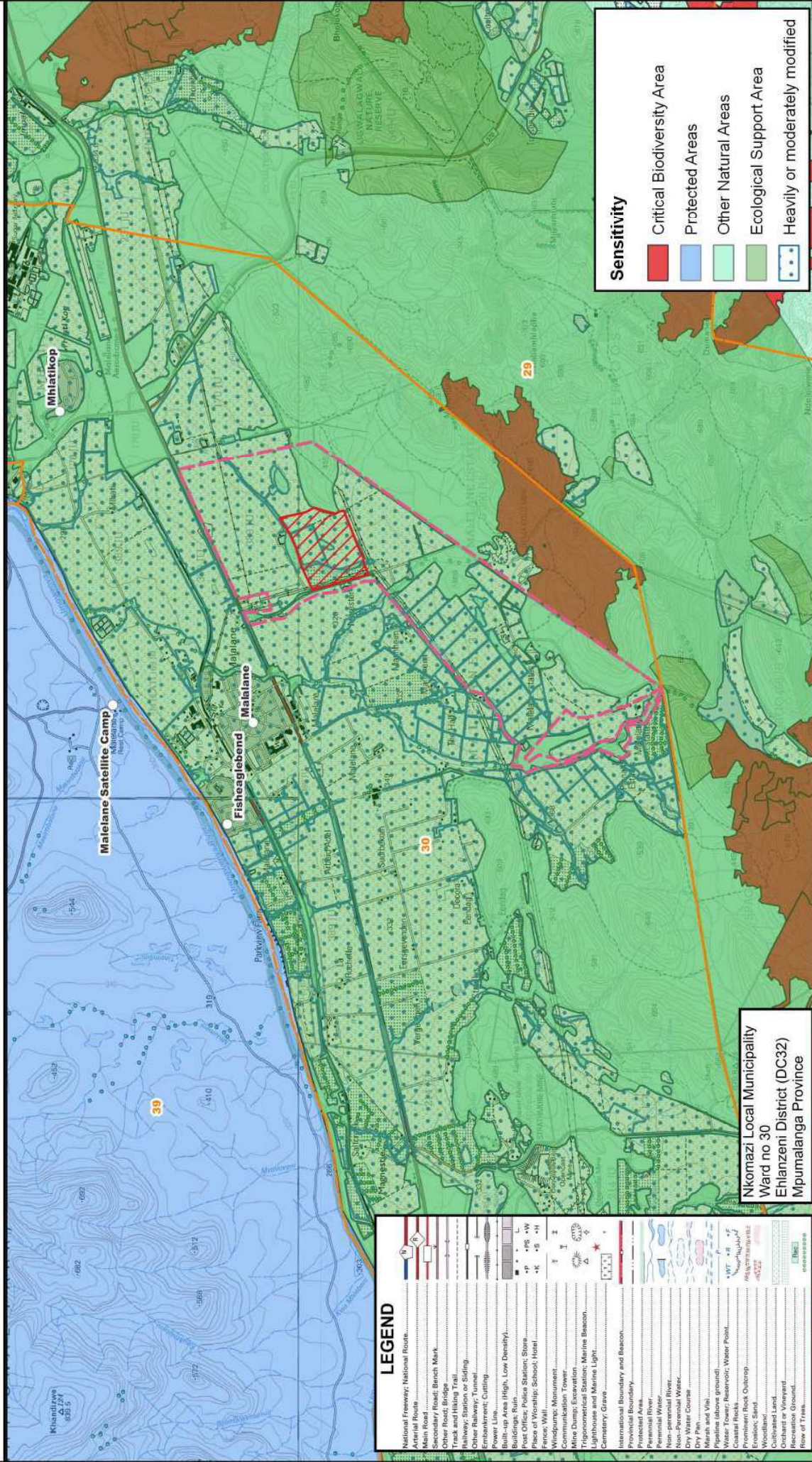


Projection: Transverse Mercator
 Datum: WGS 84
 Compiled by: Sinenjongo Spamia
 Scale = 1 : 50 000



NSOVO Environmental Consulting
 Telephone: 087-803-9294
 Email: Admin@nsovo.co.za
 Website: www.nsovo.co.za
 40 Lyncon Rd, Cariswald,
 Midrand, 1684.

Khanyazwe Flexpower Gas to Power Project in Nkomazi Local Municipality, Ward 30, Mpumalanga Province



LEGEND

National Freeway; National Route	International Boundary and Beacon
National Road	Protected Area
Other Road; Road	Perennial River
Other Road; Bridge	Non-perennial River
Track and Hiking Trail	Non-Perennial Water
Railway; Station or Siding	Other Water Course
Other Railway; Tunnel	Marsh and Vlei
Embankment; Cutting	Pipeline (above ground)
Power Lines High, Low Density	Water; Reservoir; Water Point
Buildings; Ruin	Prominent Rock Outcrop
Post Office; Police Station; Store	Woodland
Place of Worship; School; Hotel	Cultivated Land
Fence; Wall	Orchard or Vineyard
Windpump; Monument	Recreation Ground
Mine Dump; Gas Station	Flow of Trees
Telephone Station	
Lighthouse and Marine Light	
Cemetery; Grave	

Nkomazi Local Municipality
Ward no 30
Ehlanzeni District (DC32)
Mpumalanga Province

Legend

- Place Names
- RE/1/389 Boundary
- ▨ Khanyazwe Flexpower
- ▨ Wards

Date: 09 January 2024

0 1 2 km

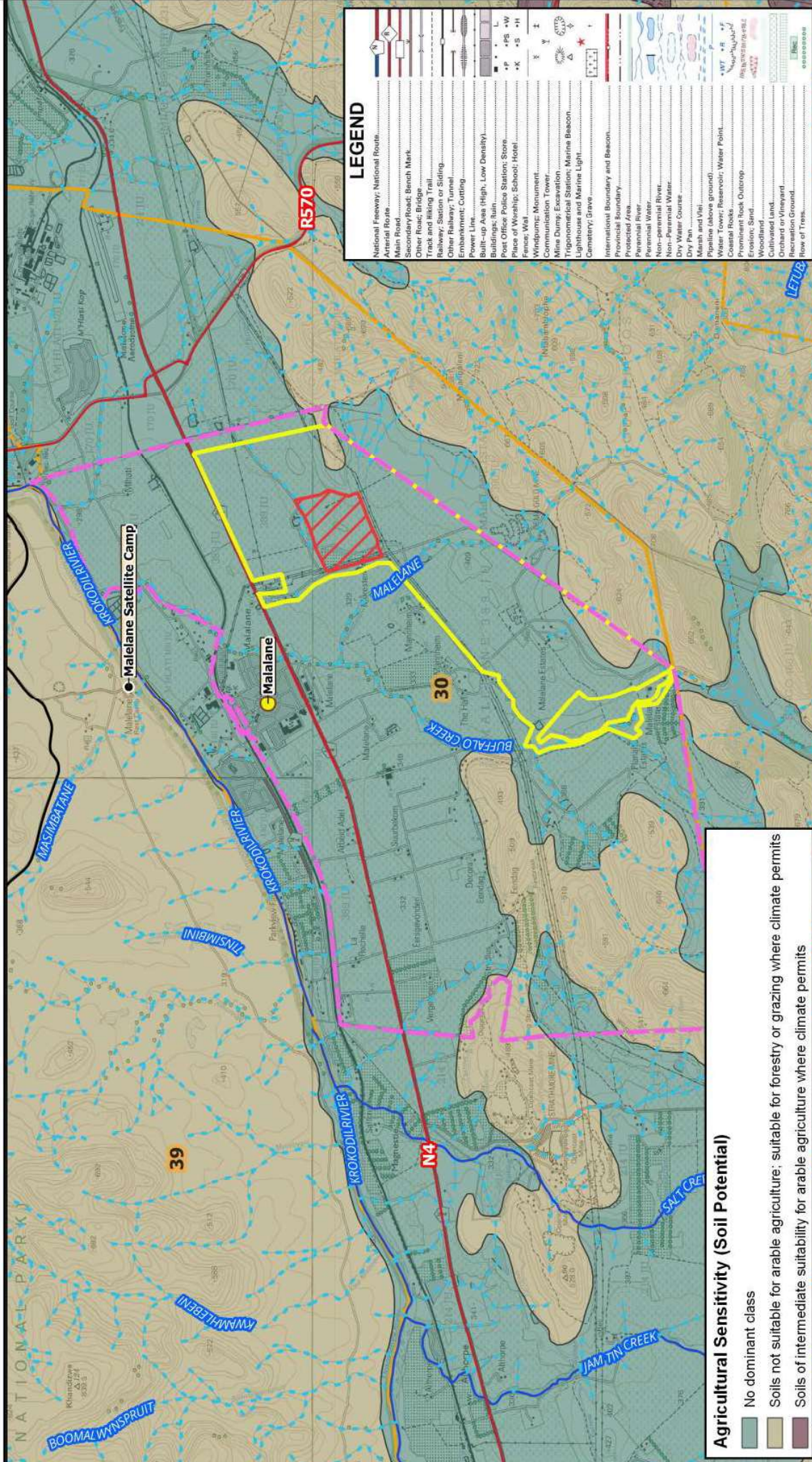
Projection: Transverse Mercator
Datum: WGS 84
Compiled by: Sinenjongo Spamila
Scale = 1 : 50 000

Sensitivity Map

NSOVO
ENVIRONMENTAL CONSULTING

Nsovo Environmental Consulting
Telephone: 087-803-9294
Email: Admin@nsovo.co.za
Website: www.nsovo.co.za
40 Lyncon Rd, Cariswald,
Midrand, 1684.

Khanyazwe Flexpower Gas to Power Project in Nkomazi Local Municipality, Ward 30, Mpumalanga Province



LEGEND

National Freeway; National Route
Aerial Route
Main Road
Secondary Road; Bench Mark
Other Road; Bridge
Track and Riding Trail
Obstacle; Station or Siding
Obstacle; Railway
Obstacle; Cutting
Power Line
Buildings; Ruin
Post Office; Police Station; Store
Place of Worship; School; Hotel
Fence; Wall
Windmill; Monument
Communication Tower
Mine Dump; Excavation
Trigonometrical Station; Marine Beacon
Lighthouse and Marine Light
Cemetery; Grave
International Boundary and Beacon
Provincial Boundary
Protected Area
Perennial River
Non-perennial River
Intermittent River
Dry Pan
Marsh and Vlei
Pipeline (above ground)
Water Tower; Reservoir; Water Point
Coastal Rocks
Prominent Rock Outcrop
Erosion; Sand
Woodland
Cultivated Land
Recreation Ground
Row of Trees

NSOVO
ENVIRONMENTAL CONSULTING

Nsovo Environmental Consulting
Telephone: 087-803-9294
Email: Admin@nsovo.co.za
Website: www.nsovo.co.za
40 Lyncon Rd, Cariswaid,
Midrand, 1684.

Date: 22 January 2023

0 1 2 km

Projection: Transverse Mercator (31°E)
Datum: WGS 84
Compiled by: Sinerjongo Spamia
Scale = 1: 50 000

Agricultural Sensitivity

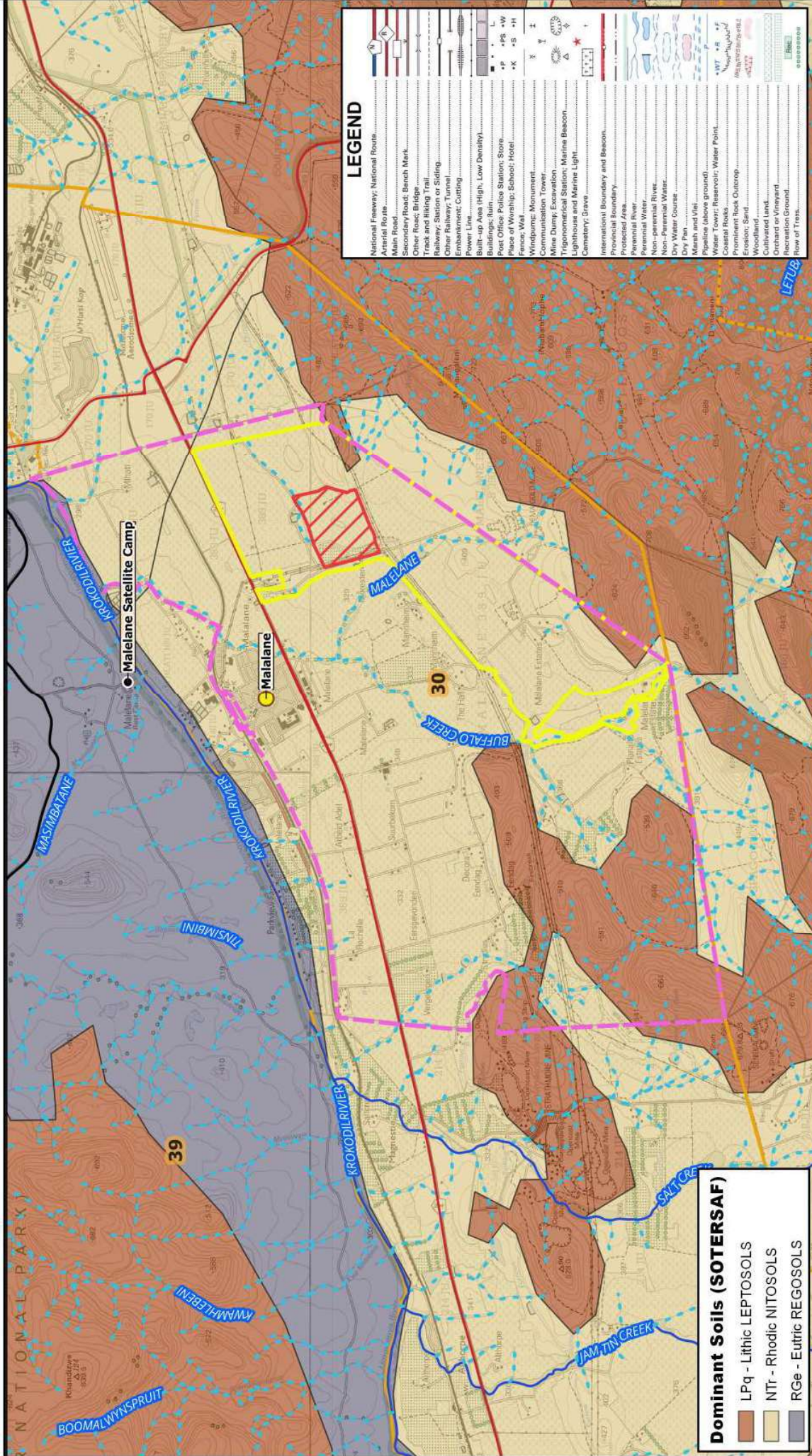
Agricultural Sensitivity (Soil Potential)

No dominant class
Soils not suitable for arable agriculture: suitable for forestry or grazing where climate permits
Soils of intermediate suitability for arable agriculture where climate permits

Legend

Town	●
Village	•
Perennial River	—
Non-Perennial River	- - -
Main Roads	—
Khanyazwe Flexpower	▧
RE 1/389 Boundary	▭
Malelane 389 JU Farm	▭
Municipal Wards	▭

Khanyazwe Flexpower Gas to Power Project in Nkomazi Local Municipality, Ward 30, Mpumalanga Province



Dominant Soils (SOTERSAF)

- LPq - Lithic LEPTOSOLS
- NTR - Rhodic NITOSOLS
- RGe - Eutric REGOSOLS

Legend

- Town
- Village
- Perennial River
- Non-Perennial River
- Main Roads
- Khanyazwe Flexpower
- RE 1/389 Boundary
- Malelane 389 JU Farm
- Municipal Wards

Dominant Soils Map

Date: 22 January 2023

0 1 2 km

Projection: Transverse Mercator (31°E)
 Datum: WGS 84
 Compiled by: Sinerjongo Spamia
 Scale = 1: 50 000

NSOVO ENVIRONMENTAL CONSULTING

Nsovo Environmental Consulting
 Telephone: 087-803-9294
 Email: Admin@nsovo.co.za
 Website: www.nsovo.co.za
 40 Lyncon Rd, Cariswaid,
 Midrand, 1684.

LEGEND

- National Freeway; National Route
- Aerial Road
- Main Road
- Secondary Road; Bench Mark
- Other Road; Bridge
- Track and Riding Trail
- Alleyway; Station or Siding
- Overhead Power Line
- Embankment; Cutting
- Power Line
- Built-up Area (High, Low Density)
- Buildings; Ruin
- Post Office; Police Station; Store
- Place of Worship; School; Hotel
- Fences; Wall
- Windpump; Monument
- Communication Tower
- Mine Dump; Excavation
- Trigonometrical Station; Marine Beacon
- Lighthouse and Marine Light
- Cemetery; Grave
- International Boundary and Beacon
- Provincial Boundary
- Protected Area
- Perennial River
- Non-perennial River
- Dry Pan
- Marsh and Vlei
- Pipeline (above ground)
- Water Tower; Reservoir; Water Point
- Coastal Rocks
- Prominent Rock Outcrop
- Erosion; Sand
- Woodland
- Cultivated Land
- Recreation Ground
- Row of Trees